

**GOODMAN
VS. CARRIER**

GOODMAN



AMANA

CARRIER



BRYANT

GAS VALVE
Single/Two Stage
Modulating

GOODMAN/AMANA

- White Rogers



CARRIER/BRYANT

- White Rogers



IGNITOR

GOODMAN/AMANA

- Silicon Nitride

- Silicon Nitride

CARRIER/BRYANT



INDUCER MOTOR

GOODMAN/AMANA

- Fasco



CARRIER/BRYANT

- Broad Ocean



BLOWER MOTOR

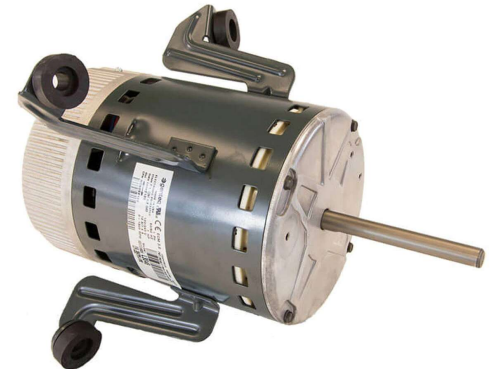
GOODMAN/AMANA

- Nidec



CARRIER/BRYANT

- Nidec
- Broad Ocean
- Emerson



HEAT EXCHANGER

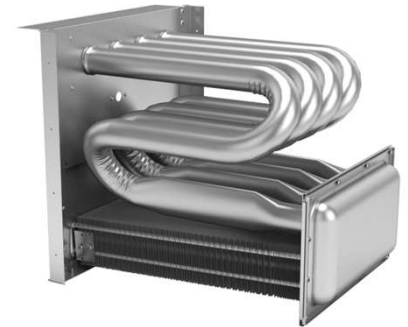
GOODMAN

- Aluminized steel primary
- Stainless steel secondary



AMANA

- Stainless steel primary
- Stainless steel secondary



CARRIER/BRYANT

- Aluminized steel primary
- Stainless steel secondary



COMFORTBRIDGE

INFINITY

COMFORTBRIDGE

- NO EXPENSIVE THERMOSTAT
- APP BASED
- CURRENTLY STAGES BASED ON TIME

ComfortBridge™
technology 

INFINITY

- EXPENSIVE THERMOSTAT
- TIME CONSUMING START UP FOR WIFI
- STAGES BASED ON TEMPERATURES





WARRANTY

Lifetime Heat Exchanger warranty

Unit Replacement warranty

10 Year Parts Warranty

Self-Diagnostic Control Board

GOODMAN	AMANA	CARRIER
✓	✓	95% ↑
96% 10 year	96% Lifetime	1 Year FAD
✓	✓	✓
7 Segment 	7 Segment 	Blinky Light

ALL EQUIPMENT MUST BE REGISTERED

UNIT
REPLACEMENT
WARRANTY

**2 YEAR
REPLACEMENT ON
ALL GOODMAN /
AMANA
EQUIPMENT**

QUESTIONS

